



**India Meteorological Department
(Ministry of Earth Sciences)**

BULLETIN NUMBER: 05 (BOB/05/2021)

TIME OF ISSUE: 1415 HOURS IST

DATED: 11.11.2021

FROM: INDIA METEOROLOGICAL DEPARTMENT (FAX NO. 24643965/24699216/24623220)

**TO: CONTROL ROOM, NDM, MINISTRY OF HOME AFFAIRS (FAX.NO. 23093750)
CONTROL ROOM NDMA (FAX.NO. 26701729)
CABINET SECRETARIAT (FAX.NO.23012284, 23018638)
PS TO HON'BLE MINISTER FOR S & T AND EARTH SCIENCES (FAX NO.23316745)
SECRETARY, MOES (FAX NO. 24629777)
H.Q. (INTEGRATED DEFENCE STAFF AND CDS) (FAX NO. 23005137/23005147)
DIRECTOR GENERAL, DOORDARSHAN (23385843)
DIRECTOR GENERAL, AIR (23421105, 23421219)
PIB MOES (FAX NO. 23389042)
UNI (FAX NO. 23355841)
D.G. NATIONAL DISASTER RESPONSE FORCE (NDRF) (FAX NO. 26105912, 2436 3260)
DIRECTOR, PUNCTUALITY, INDIAN RAILWAYS (FAX NO. 23388503)
CHIEF SECRETARY, ANDHRA PRADESH (FAX NO. 0863-2441029, 08645-246600)
CHIEF SECRETARY, TAMIL NADU (FAX NO 044-25672304)
CHIEF SECRETARY, PUDUCHERRY (FAX NO 0413-2334145)
CHIEF SECRETARY, KERALA (FAX NO 0471-2327176)
CHIEF SECRETARY, KARNATAKA (FAX NO 080-22258913)
CHIEF SECRETARY, ANDAMAN & NICOBAR ISLANDS (FAX NO. 03192- 232656)**

Sub: Depression over southwest & adjoining west-central Bay of Bengal.

The Depression over southwest & adjoining west-central Bay of Bengal moved northwestwards with a speed of 14 kmph during past 06 hours and lay centred at 1130 hrs IST of today, the 11th November 2021, over southwest & adjoining west-central Bay of Bengal, near Lat. 12.6°N and Long. 80.9°E, about 80 km east-southeast of Chennai and 140 km east-northeast of Puducherry. It is very likely to move northwestwards and cross north Tamil Nadu & adjoining south Andhra Pradesh coasts around Chennai during the evening of today, the 11th November 2021.

Heavy to very heavy & extremely heavy falls realised at isolated places over Tamil Nadu & Puducherry and south coastal Andhra Pradesh yesterday. Chief amounts of rainfall reported over these regions are enlisted in Annexure.

Forecast track and intensity are given in the following table:

Date/Time(IST)	Position (Lat. °N/ long. °E)	Maximum sustained surfac wind speed (Kmph)	Category of cyclonic disturbance
11.11.21/1130	12.6/80.9	45-55 gusting to 65	Depression
11.11.21/1730	13.0/80.4	45-55 gusting to 65	Depression
11.11.21/2330	13.3/80.1	40-50 gusting to 60	Depression

Warnings:

(i) Rainfall (warning graphics enclosed)

- **11th Nov.:** Light to moderate rainfall at most places **with heavy to very heavy rainfall at a few places & extremely heavy falls at isolated places** very likely over north coastal Tamil Nadu, Puducherry, north interior Tamil Nadu, south coastal Andhra Pradesh and Rayalaseema and **heavy to very heavy rainfall** at isolated places over south interior Karnataka, Kerala and heavy rainfall at isolated places over north coastal Andhra Pradesh.
- **12th Nov.:** Light to moderate rainfall at most places with **heavy rainfall at isolated places** very likely over Tamil Nadu, Puducherry, coastal Andhra Pradesh, Rayalaseema, south interior Karnataka & Kerala.

(ii) Wind warning

- Squally wind speed reaching 45-55 kmph gusting to 65 kmph likely to prevail over southwest & adjoining westcentral Bay of Bengal and along & off Tamil Nadu, Puducherry & south Andhra Pradesh coasts on 11th November and reduce gradually from 12th morning.

(iii) Sea condition

- Sea condition will be rough to very rough over southwest & adjoining west-central Bay of Bengal and along & off Tamil Nadu, Puducherry & south Andhra Pradesh coasts till 12th November morning.

(iv) Fishermen Warning

- Fishermen are advised not to venture into southwest & adjoining west-central Bay of Bengal and along & off Tamil Nadu, Puducherry & south Andhra Pradesh coasts till 12th November morning. (Graphics enclosed).

(v) EXPECTED IMPACT & ACTION SUGGESTED FOR NORTH Tamil Nadu (including Chennai, Puducherry & south Andhra Pradesh)

A. Impact Expected

- Localized Flooding of roads, inundation and water logging in low lying areas and closure of underpasses mainly in urban areas of the above region.
- Occasional reduction in visibility due to heavy rainfall.
- Disruption of traffic in major cities due to water logging in roads leading to increased travel time.
- Minor damage to kutcha roads.
- Possibilities of damage to vulnerable structure.
- Localized Landslides/Mudslides
- Damage to horticulture including banana, Papaya & Drumstick and standing crops in some areas due to squally wind and inundation.
- It may lead to riverine flooding in some river catchments (for riverine flooding please visit Web page of CWC)

B. Action Suggested

- People in affected areas are advised to stay in safer places.
- Check for traffic congestion on your route before leaving for your destination.
- Follow any traffic advisories that are issued in this regard.
- Avoid going to areas that face the water logging problems often.
- Avoid staying in vulnerable structure.

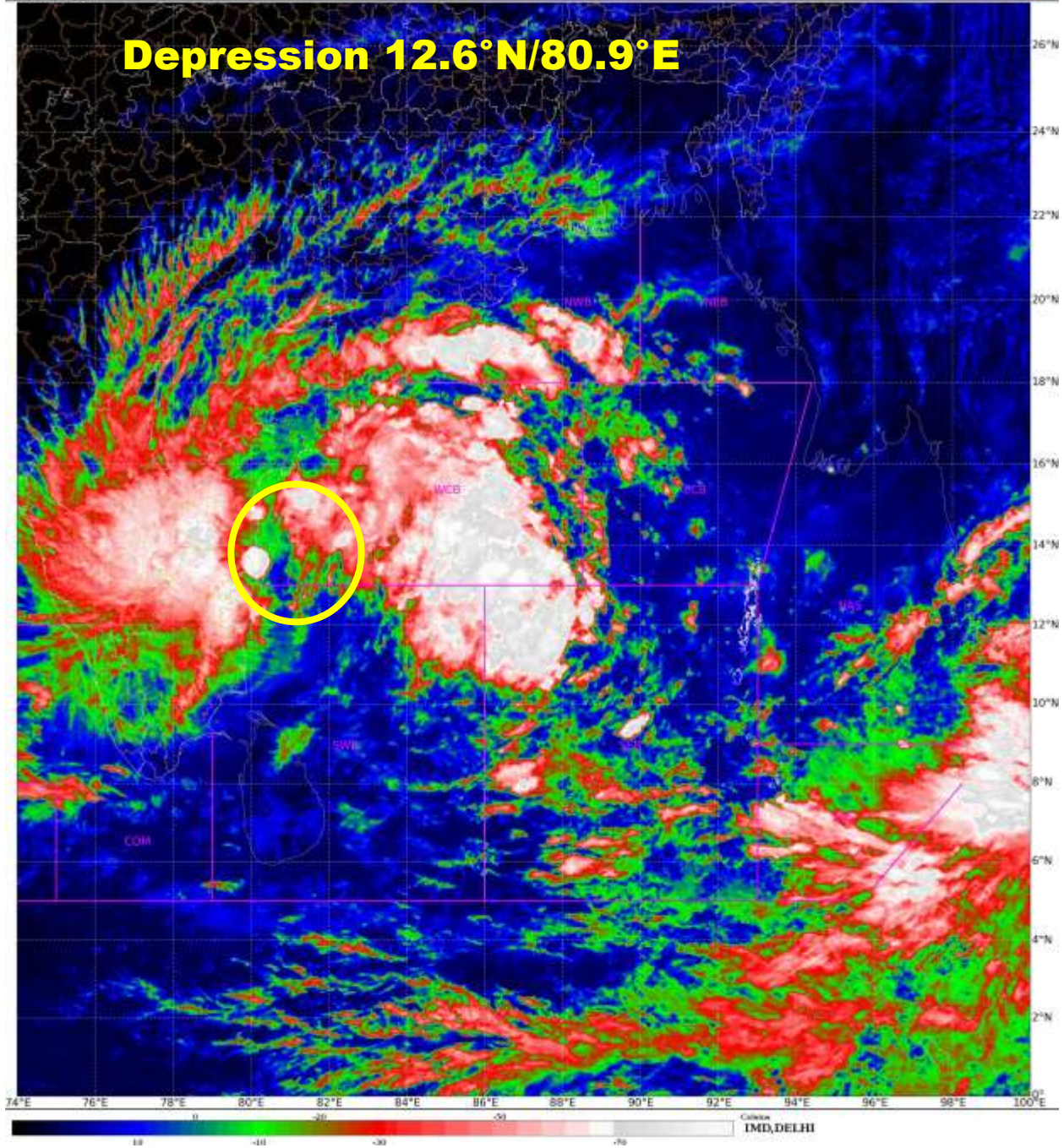
(Sunitha Devi. S)
Scientist-F, RSMC, New Delhi

Copy to: ACWC Mumbai/ CWC Ahmedabadr/MC Goa/CWC Thiruvanathapuram

LEGEND: Heavy Rainfall: 64.5 to 115.5mm, **Very Heavy Rainfall:** 115.6 to 204.4mm **Most Places:** more than 76% of total stations, **Isolated Places:** Less than 25% of total stations



Depression 12.6°N/80.9°E





OBSERVED AND FORECAST TRACK ALONGWITH CONE OF UNCERTAINTY OF DEPRESSION OVER SOUTHWEST & ADJOINING SOUTHWEST BAY OF BENGAL BASED ON 0600 UTC OF 11TH NOVEMBER, 2021



DATE/TIME IN UTC

IST=UTC + 0530

L: LOW PRESSURE AREA

WML: WELL MARKED LOW PRESSURE AREA

D: DEPRESSION (17-27 KT)

DD: DEEP DEPRESSION (28-33 KT)

CS: CYCLONIC STORM (34-47 KT)

SCS: SEVERE CYCLONIC STORM (48-63KT)

VSCS: VERY SEVERE CYCLONIC STORM (64-89 KT)

ESCS: EXTREMELY SEVERE CYCLONIC STORM (90-119 KT)

SuCS: SUPER CYCLONIC STORM (\geq 120 KT)

● LESS THAN 34 KT

○ 34-47 KT

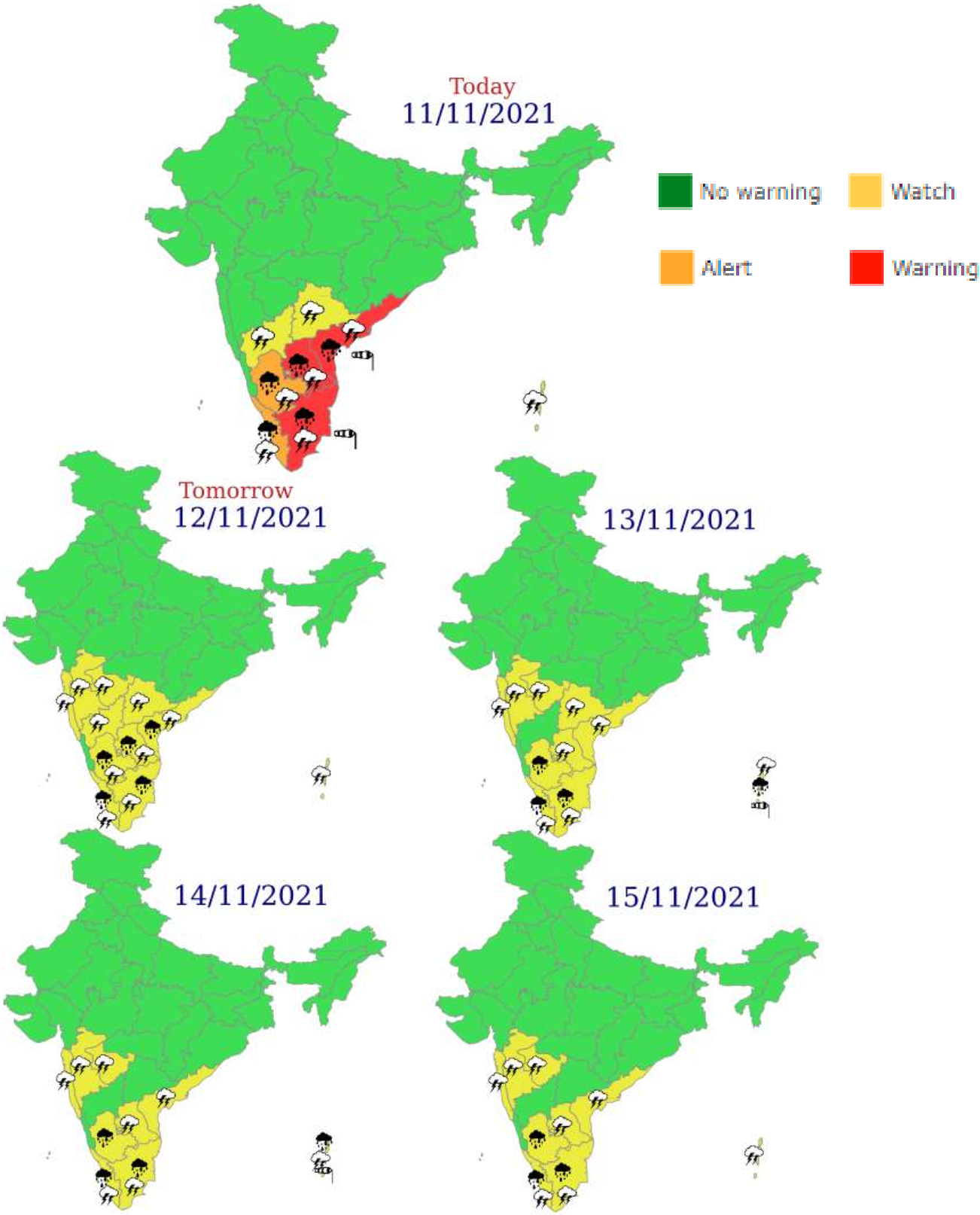
○ \geq 48 KT

— OBSERVED TRACK

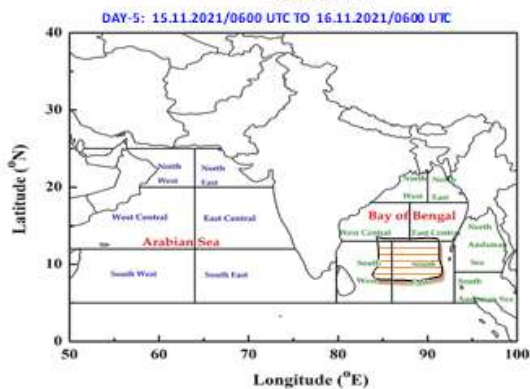
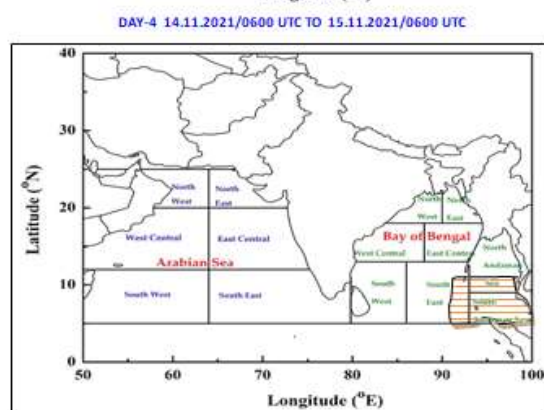
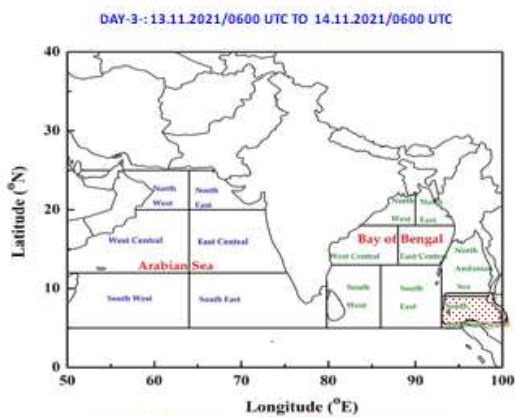
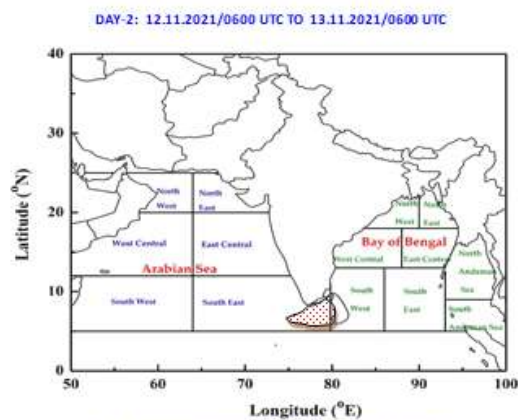
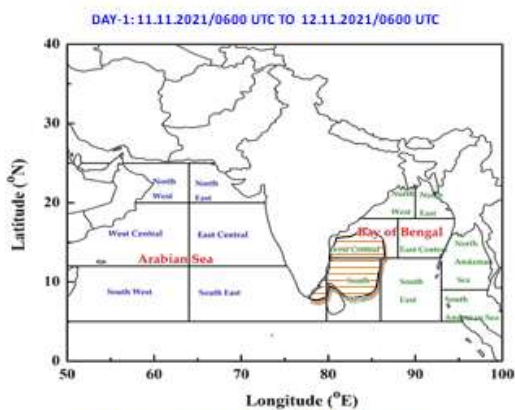
— FORECAST TRACK

▲ CONE OF UNCERTAINTY

Meteorological Sub-division level heavy rainfall warning



INDIA METEOROLOGICAL DEPARTMENT
FISHERMAN WARNING FOR BAY OF BENGAL AND ARABIAN SEA



AREA UNDER FISHERMEN WARNING

- 40-50 KMPH GUSTING TO 60 KMPH (SQUALLY WEATHER)
- 45-55 KMPH GUSTING TO 60 KMPH (SQUALLY WEATHER)
- 50-60 KMPH GUSTING TO 70 KMPH (STRONG WIND)

Annexure I

Rainfall realised (cm) during past 24 hours ending at 0830 hrs IST of today:

Tamilnadu, Puducherry & Karaikal: Chengalpattu: Tambaram-23, Mahabalipuram-17, Kelabakkam, Satyabama & Thirupporur-12 each, Thirukalukundram-11, Chengalpattu-10, Maduranthagam-9; Tiruvallur: Cholavaram-22, Ennore-21, Gummidipoondi & Red Hills-18 each, Ambathur & Thomaraipakkam-15 each, Chembarabakkam-14, Ponneri-13, Poonamallee-12, Tiruvallur & Uthukottai-10 each, Koratur & Pondi-9 each; Chennai: Peerambur-17, Nungambakkam-16, MGR Nagar-15, Meenambakkam, Taramani, Anna University & Chennai-14 each; Kancheepuram: Kattukuppam-11, Sriperumbudur-10; Villupuram: Marakkanam-10.

Coastal Andhra Pradesh: Nellore: Sullurpeta-18, Tada-14.

Rayalaseema: Chittoor: Satyavedu-11, Tirupati-8, Puttur-7.